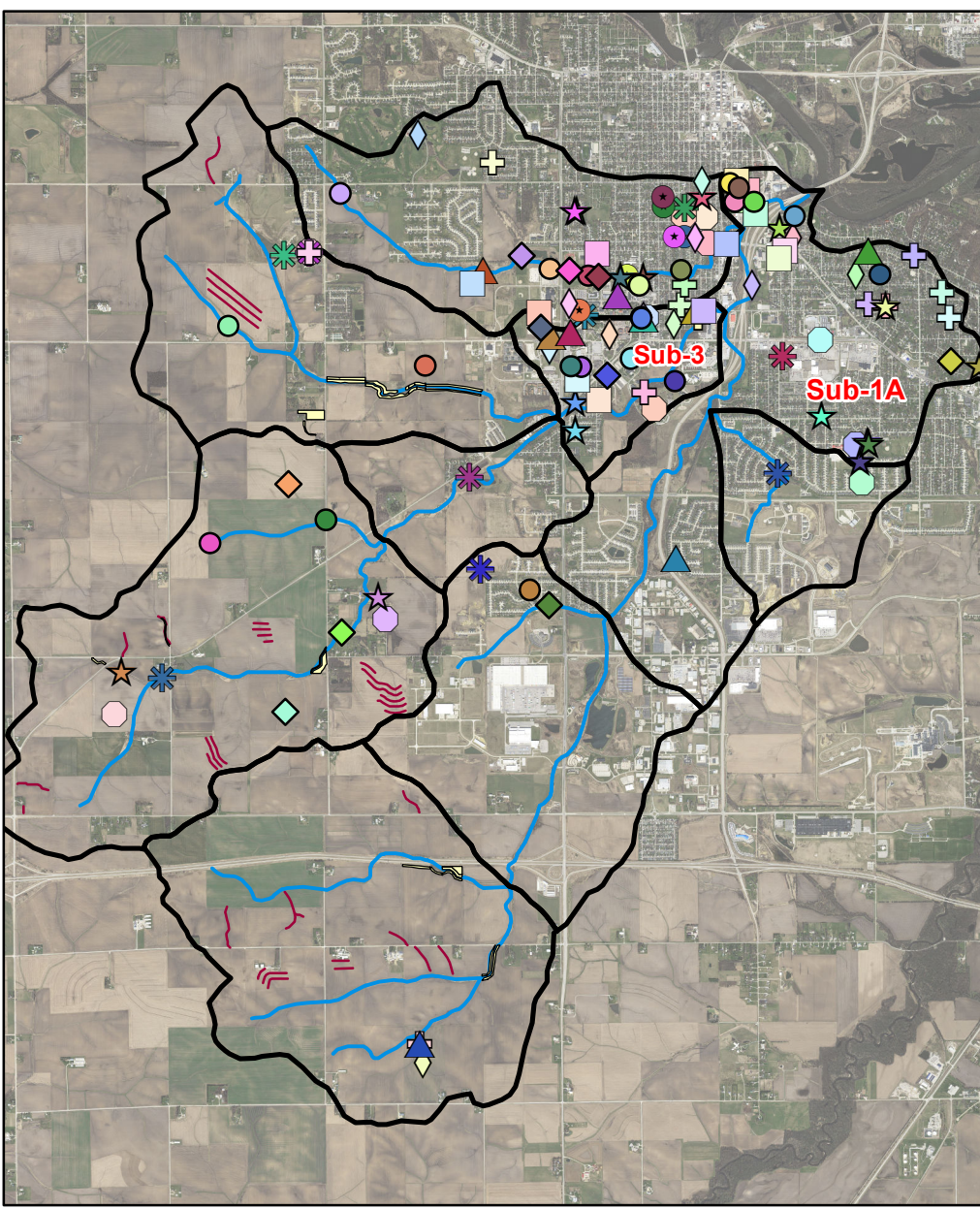


Dry Run Creek Watershed Improvement Project Installed & Proposed Practices FY2007-2020



- Legend**
- Subwatersheds
 - Dry Run Creek
 - CRP 2019
 - DRC Terraces
 - 1, UNI Streambank Stab.
 - 2, Streambank Riffle/Pool
 - 3, UNI Tower's Bio Cell
 - 4, McLeod Permeable Pavement
 - 5, UNI BSC Bio Cell
 - 6, Neola St. Rain Garden
 - 7, Grassed Waterway
 - 8, Meadowview SQR
 - 9, Streambank Stab.
 - 10, Grassed Waterway
 - 1, Res. Rain Garden
 - 2, Meadowview Bio Swale
 - 3, BRC Bio Cell
 - 4, Grassed Waterway
 - 5, Grassed Waterway
 - 6, City Bio Cells PH 1 (3 Count)
 - 7, City Bio Cells PH 1 (2 Count)
 - 8, City Bio Cells PH 1 (2 Count)
 - 9, City Bio Cells PH 1 (4 Count)
 - 10, City Bio Cells PH 1 (3 Count)
 - 11, UNI Permeable Asphalt
 - 12, UNI Permeable Pavers
 - 13, 23rd St. Tree Grates
 - 14, Wesley Permeable Pavers
 - 15, Wesley Bioretention Cell
 - 16, UNI Roth Bio Cell
 - 17, Res. Rain Garden
 - 18, Grassed Waterway
 - 19, Grassed Waterway
 - 20, Grassed Waterway
 - 21, UNI Green Roof
 - 22, UNI Building Biocell
 - 1, City Bio Cell (2 Count)
 - 2, City Bio Cell (2 Count)
 - 3, City Bio Cell (3 Count)
 - 4, City Bio Cell (4 Count)
 - 5, City Bio Cell (1 Count)
 - 6, City Bio Cell (3 Count)
 - 7, City Bio Cell (3 Count)
 - 8, City Bio Cell (3 Count)
 - 9, City Bio Cell (7 count)
 - 10, Grassed Waterway
 - 11, UNI New St. Housing PH II (WIRB)
 - 12, UNI Dome Permeable Pavers
 - 13, UNI Soil Quality Restoration
 - 1, UNI Soil Quality Restoration
 - 2, UNI Kamerick Biocell
 - 3, UNI West Streambank
 - 4, Residential Rain Garden
 - 5, Residential Rain Garden
 - 6, Residential Rain Garden
 - 7, Cover Crop
 - 8, City Permeable Alley (Mernert St.)
 - 9, Wesley Permeable Parking Lot
 - 1, UNI Baker Hall Biocell
 - 2, UNI South Arts Parking Lot Biocell
 - 3, UNI Soil Quality Restoration
 - 4, City Streambank Stabilization (Am Vets)
 - 5, City Bioretention Cells (Pheasant Ridge)
 - 6, City Permeable Paver Alley (18th St.)
 - 7, City Permeable Paver Alley (Seerley Blvd.)
 - 8, Wesley Rain Water Harvesting
 - 9, Residential Rain Garden
 - 10, Residential Rain Garden
 - 11, Cover Crops
 - 12, Residential Rain Water Harvesting
 - 1, Grassed Waterway
 - 2, Permeable Paver Alley
 - 3, UNI Stormwater Wetland
 - 4, CF Permeable Paver Strip
 - 5, Residential Permeable Driveway 1
 - 6, Residential Permeable Driveway 2
 - 7, Residential Permeable Driveway 3
 - 8, Residential Permeable Driveway 4
 - 9, Residential Rain Garden 1
 - 10, Residential Rain Garden 2
 - 11, Residential Rain Garden 3
 - 12, Residential Rain Garden 4
 - 13, Residential Rain Garden 5
 - 14, Residential Rain Gardens 6 + 7
 - 15, Residential Rain Garden 8
 - 16, Native Prairie Strip
 - 1, UNI SEC Green Roof
 - 2, Cedar Falls Merner Streambank Stabilization
 - 3, Cedar Falls Permeable Paver Alley 1
 - 4, Cedar Falls Permeable Paver Alley 2
 - 5, Cedar Falls Permeable Paver Alley 3
 - 6, Cedar Falls Permeable Paver Alley 4
 - 1, UNI CEEE Streambank Stabilization
 - 2, Hearst Center Biocell
 - 3, Residential Permeable Driveway
 - 4, Residential Permeable Driveway
 - 5, Residential Rain Garden
 - 6, Residential Rain Garden
 - 7, Residential Rain Garden
 - 8, Residential Rain Garden
 - 9, Residential Rain Garden
 - 10, Elementary School Rain Garden
 - 11, Cedar Falls Permeable Paver Alley
 - 12, Cover Crops
- FY19 Practices - Completed**
- 1, Slumberland Bioretention Cell
 - 3, UNI SEC Permeable Paver Plaza
 - 4, CFCSLD Aldrich Elementary Bioretention Cells
 - 6, Residential Permeable Driveway
 - 7, Residential Rain Gardens
 - 8, Residential Rain Garden
 - 12, CF Permeable Paver Alley
 - 13, CF Oxbow Restoration
 - 17, Cover Crops
- FY19/FY20 Practices - To Be Installed**
- 2, University Avenue Bioretention Cells
 - 5, Wesley Foundation Rain Garden
 - 8, Residential Rain Garden
 - 9, Residential Rain Garden
 - 10, Residential Rain Garden
 - 11, Residential Rain Garden
 - 14, Clay Street Park Bioretention Cell
 - 15, Clay Street Park Permeable Paver Alley
 - 16, Grassed Waterway
 - 18, Church Native Prairie Establishment
 - 19, Residential Rain Garden
 - 20, Residential Rain Garden
 - 21, Wesley Foundation Rain Garden #2
 - 22, Slumberland Biocells/Permeable Pavers
 - 24, UNI Hillside Court Native Prairie

